

Winter Pak BASIC ATV 2/4 Zone Hand Warmer Elements, Thumb Warmer and Controller 210039, 210049, 0631-0015

**DO NOT USE ON SNOWMOBILES OR OTHER DEVICES WITHOUT A
REGULATED DC POWER SUPPLY. IT WILL NOT WORK!**

Components: The Winter Pak Basic from Symtec, Inc. includes a set of Hand Warmers, an easy to apply Thumb Warmer, a dual function – 5 level Temperature Controller, the accessories to install these components, and Installation and Operating Instructions to assist vehicle owners. Some kits also contain a DC plug to use in the 4-zone feature for connecting accessory heating devices.

Installation Instructions:

Mounting Hand and Thumb Warmers.

1. Remove grips (use compressed air if available). Clean handlebar to remove any residue and dry.
2. Non throttle side hand warmer: Peel release paper from back of hand warmer and position heater with wire leads facing the headlight. Remove air pockets by pressing with thumb and moving toward edge.
3. Throttle side hand warmer: Peel release paper from back of hand warmer and position heater with wire leads facing the headlight.
4. Apply a high temperature, 2-part epoxy (such as Permatex Quick Set) to area where grips will be located.
5. Install grips (use compressed air if available) and let adhesive dry.
6. Peel the release paper from the Thumb Warmer and adhere it to the front (thumb) side of the throttle.
7. Slide the piece of heat shrink tubing over the Thumb Warmer and throttle and use a heat gun or other heat source to shrink the tubing but be careful not to burn it.
8. Use one cable tie on the throttle to secure the wires and provide a strain relief.
9. Push the throttle full throttle, route wire using cable ties, leave relief in the wire so the throttle in the full open position does not strain the wire.

Mounting the Temperature Controller.

Determine if there is room to mount the Temperature Controller on the handlebar. If there is a good location follow the Option A instructions and Figure 1 for the handlebar mounting. If the controller would be more accessible mounted on a panel or other surface, follow Option B mounting instructions and refer to Figure 2.

Option A: Figure 1

1. If the handlebar is the smaller 7/8" diameter type insert the rubber spacer (item 8) and slide the handlebar mount (item 7) over the bar. For larger diameter bars, place the piece of electrical tape around the bar at the chosen mounting location. Slide the handlebar mount (item 7) over the taped bar. Insert a nut (item 4) into the side of the mount with the 6 sided recess. Install a screw (item 5) and tighten lightly.
2. Attach the Pivot (item 6) to the handlebar mount (item 7) with the shorter screw (item 2) and nut (item 4) inserted in the mount. Install a lock washer (item 3) between the two but do not tighten the screw securely.

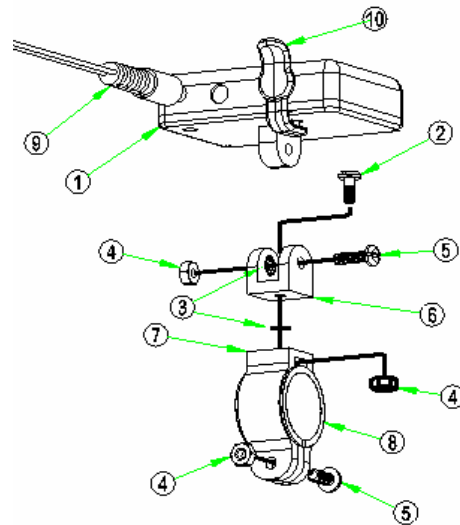


Figure 1

3. Place the tab on the bottom of the Temperature Controller (item 1) in the slot of the Pivot (item 6) and insert the screw (item 5). At this point rotate the handlebar mount (item 7), the Pivot, and the Temperature Controller to a location that provides the best view of the Controller to the driver.
4. Tighten the screw (item 5) on the bottom of the handlebar mount to secure it to the handlebar with nut (item 4).
5. Without moving the Pivot, (item 6) remove the screw (item 3) holding the Controller to the Pivot (item 5) and set the Controller aside.
6. Securely tighten the screw (item 2) that attaches the Pivot to the handlebar mount fixing the Pivot angle.
7. Attach the Temperature Controller to the Pivot with the screw (item 5) and nut placed in the 6 sided recess of the Pivot. Insert a lock washer (item 3) in the slot of the Pivot along with the tab from the bottom of the Temperature Controller as the screw is inserted. The lock washer will keep the Controller from moving when the screw is tightened.
8. Rotate the Controller to the correct angle for viewing and tighten the screw.
9. Using the cable ties, route the wires from the Controller, Grips, and Thumb Warmer to a common connection point.

Option B: Figure 2

1. Attach the Temperature Controller (item 1) to the Pivot (item 6) with screw (item 5) and nut (item 4).
2. Choose a point on a panel or surface where the Controller will be mounted. The location should be chosen where a hole can be drilled in the panel and have access to install a washer and nut on the bottom side. Adjust the angle of the Controller for the best view for the driver and mark the angle that the Pivot will be installed.

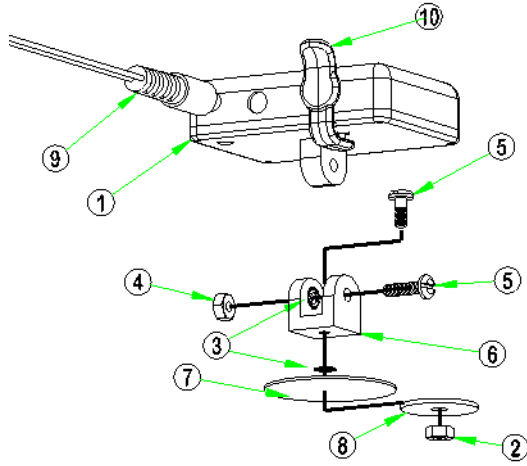


Figure 2

3. Drill a 5/32" hole in the panel (7) where the pivot should be mounted. **(Be sure that you do not drill into the gas tank)**
4. Separate the Controller and install the Pivot, at the angle marker previously, with the screw (item 5, removed from the bottom of the handlebar mount), fender washer (item 8), and locking nut (item 2). Place the locking washer (item 3) between the Pivot and the panel to keep it from rotating.
5. Attach the Controller (item 1) to the Pivot with the screw (item 5) and nut placed in the 6 sided recess of the Pivot. Insert a lock washer (item 3) in the slot of the Pivot along with the tab from the bottom of the Controller as the screw is inserted. The locking washer will keep the Controller from moving after the screw is tightened.
6. Rotate the Controller to the best angle for viewing and tighten the screw.
7. Using the cable ties, route the wires from the Controller, Grips, and Thumb Warmer to a common connection point.

Electrical Connections: Figure 3

1. Insert the pin connectors from the left hand warmer into the center holes of the 6 pin connector. Assure they are secure and cannot come out.
2. Connect the 6 pin Female Connector from the hand and thumb warmer to the 6 pin male connector from the Temperature controller.
3. Connect the Red wire to 12V. Locate a voltage controlled power wire (such as one leading to a headlight taillight, or dash light). Using the red tap connector, place this power wire into the continuous channel and insert the red wire into (do not strip) into adjacent channel. Using pliers, press the metal contact flush with top of connector. Close the hinged cover until latched.

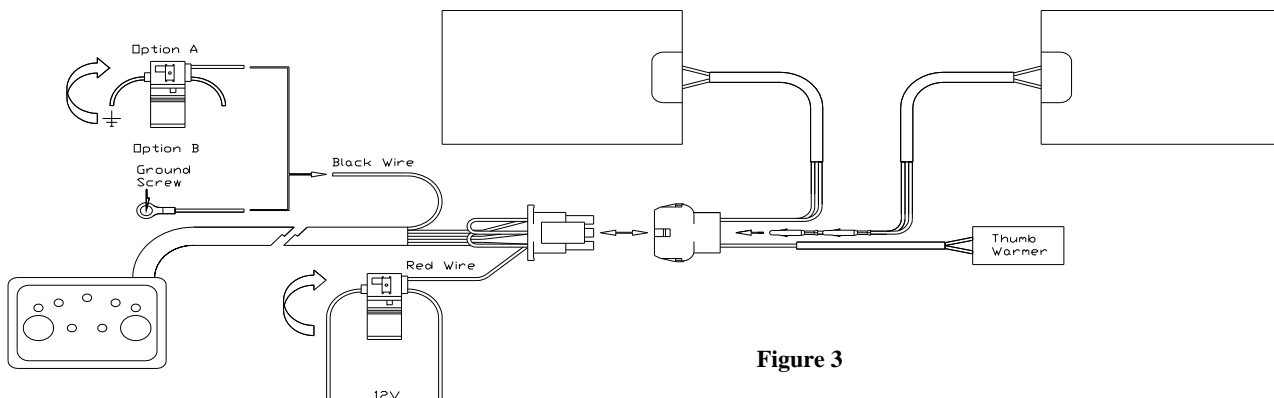


Figure 3

4. Connect the Black wire to a ground. For Ground connection use a frame component or a Ground wire, not a rubber isolated component such as a handlebar or a steering assembly. Use the red tap connector described in item 3 above or the ring terminal

Operating Instructions:

After the 4 Zone Winter Pak is installed on your vehicle you will be able to select and adjust the heat level of the Hand warmers, Thumb warmer and AUX 1 and AUX 2. There are switches under the red circle marker "SELECT" and "POWER SET" on the Temperature Controller .

1. When the ignition is turned on, the LED above the word "GRIPS" will be on.
2. With the "POWER SET" pad select the heat level for the Hand warmer Grips. Each time the pad is pressed another LED will light indicating a higher heat level. Depressing the pad 5 times will provide the highest level of heat. When the pad is pressed again the heat will be off and the heat level selection can start again.
3. Press the "SELECT" pad and the LED above the word "GRIPS" will go off and the LED above the word "THUMB" will light indicating the heat level of the Thumb warmer can be set.
4. Press the "POWER SET" pad to select the heat level for the Thumb warmer. Setting the heat level for the Thumb warmer will not affect the heat level set previously for the Hand warmers. Use the same process to set the AUX 1 and AUX 2 settings.
5. Depressing the "SELECT" pad will switch between the GRIP, THUMB, AUX 1 and AUX 2 allowing the heat level of each to be adjusted.
6. The Temperature Controller will shut off automatically after 2 hours if no adjustments are made. To reactivate the Temperature Controller press the "SELECT" pad and the previous settings will be restored.
7. Dimming the LEDs for night riding. Depress both the "SELECT" and the "POWER SET" pads at the same time toggles the LED intensity for day or night operation.

Applies only to 4 Zone Kits:

8. The two plugs (10) keep dirt out of the Auxiliary 1 and 2 plugs. Keep these plugged when not in use. Each of these outputs supplies up to 60 watts of power for use with a heated seat, heated vest, foot warmers or any other 12 volt apparatus.
9. One DC plug (9) is supplied with the kit which you can use to connect to a heated vest, seat heater or similar device.
10. These controllers have memory functions such that if the power is shut off, and then restored, the previous heat settings will be restored.